



Craft Shop

Our Craft Shop is well stocked with an interesting variety of quality goods, locally sourced wherever possible.

Shetland Knitwear (Hats, Gloves and Scarves)

Shetland Publications

Shetland Jewellery

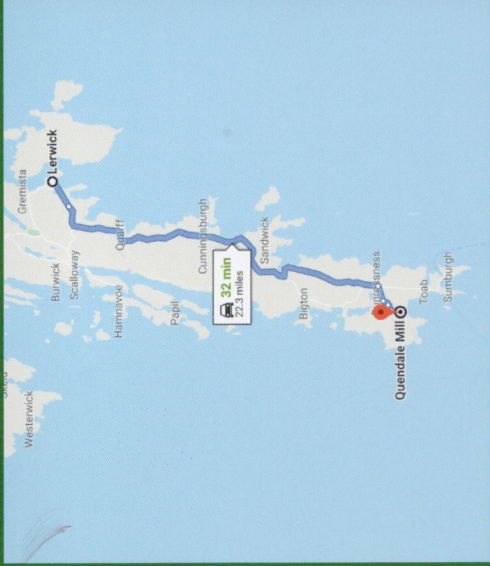
Shetland Soap

Cards, Souvenirs, Photos and Drawings
by Local Artists

Hot and Cold Drinks and Biscuits



Nescafe & Go Hot Drinks.
Biscuits & confectionary.
Chilled cold drinks.



The Mill is situated approximately (4km) off the main Sumburgh to Lerwick road (A970) and is well signposted.

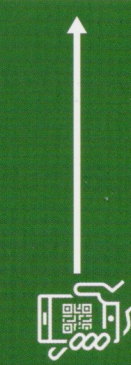
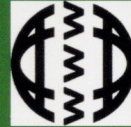
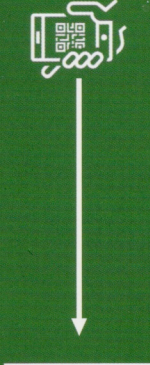
Open Mid April to Mid October

Mon to Sun: 10:00am to 5:00pm

Visitor Information Point

We hold a large selection of leaflets and information on all areas of Shetland and can help you plan your holiday itinerary if you wish.

We can also advise and provide information on places of interest to visit, particularly the South Shetland Mainland.



Quendale Water Mill

History and Heritage

Craft Shop and Visitor Attraction
Hot and Cold Drinks and Biscuits

Situated in a sheltered valley in Quendale, Dunrossness, the Mill is in the middle of a working farm and is the last remaining industrial building of its era in Shetland and open to visitors 6 months of the year

Visitor information service with a comprehensive range of leaflets on display

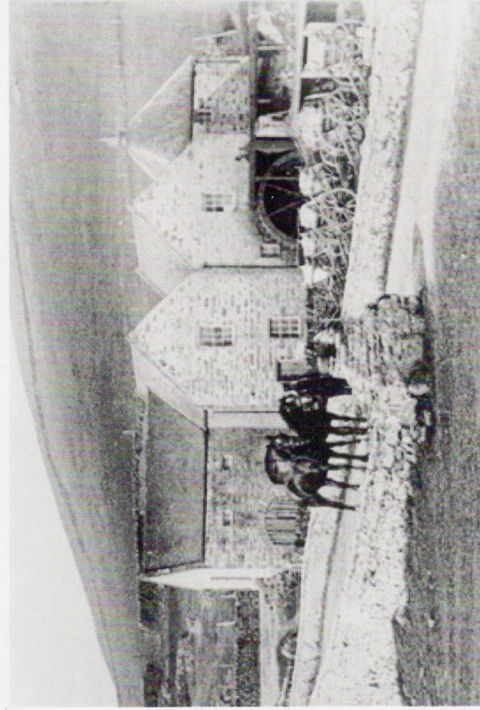
Website: www.quendalemill.co.uk

Email: info@quendalemill.co.uk

What3words: ///customers.asks.seasonal

Phone: 01950 460969





Mill History

The Mill was built in 1867 by the Grierson family, Lairds of the Quendale Estate.

Grinding commenced the following year and continued on a commercial basis until 1948. Oats and Bere were brought to be ground into meal from a large surrounding area (from as far afield as Fair Isle and Whiteness) the transport first of all being by pony and cart, followed in time by lorries as the roads were improved.

This is an overshot watermill so called because the water is channelled to flow over the top of the wheel, the downward force and weight of the water forcing the wheel to rotate, thus driving the machinery in the Mill.

The name Quendale is believed to derive from Old Norse Kverndal - (mill valley), so there were obviously mills in the area long before the Quendale Mill was built.



Courtyard with Reapers on Display

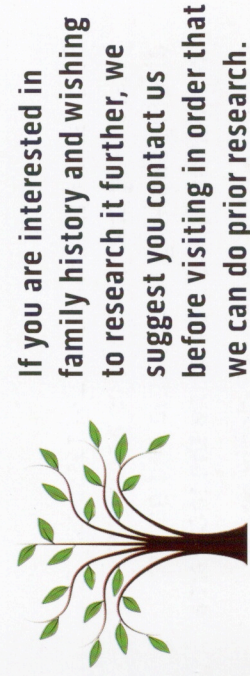
Displayed throughout the Mill and Mill courtyard is a selection of machinery, tools and artefacts used by local people (and sometimes also made by them) to ease the burden of the crofter's work. From ancient hand tools to horse drawn ploughs, reapers and threshing machines our displays show the tools and equipment used by many crofters, who besides working on the land and being fisherman, were also often cobblers and craftsmen.



Mill Floor and Video Room

Watch the professional DVD of the Mill in full working order, showing local people busy operating the machinery and relating the history of the Mill.

And also watch a video highlighting the Braer oil tanker grounding and subsequent oil spill which occurred in January 1993. Current exhibits in our video room include artifacts from the 'White Star Liner Oceanic' and also coin and banknote collections which have been donated or loaned by local people and visitors for public display in the Mill.



Local Family History

If you are interested in family history and wishing to research it further, we suggest you contact us before visiting in order that we can do prior research.

Photo Exhibition
Birds and Wildflowers of Dunrossness, an interesting and informative photographic display showing the wildlife and nature that can be found all around the local area.

Queries will be answered gladly by our custodians.

Email: info@quendalemill.co.uk